

CONSULTANTS

SEA

PROJECT MANAGER C. EWALL

PLAIN

5

EROSION AND SEDIMENT CONTROL NOTES

- ODOT ITEM 659.



SIL | FENCE DETAIL

NO SCALE

- THE HEIGHT OF THE FABRIC.



INLET SEDIMENT TRAP

NO SCALE

- III.2 OR EQUAL..



SIMPLIFIED CONDENSATION UNIT ANALYSIS

NO SCALE

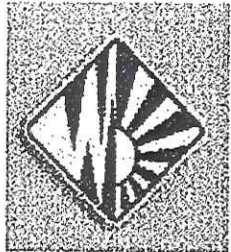


STORM SEWER SCHEDULE					
STRUCT. NO.	TOP EL.	INLET SIZE	OUTLET SIZE	REMARKS	
CB 1	601.30	6" 5	6" B35	8" DRAIN BASIN	
CB 2	601.30	6" 5	6" B34	8" DRAIN BASIN	
CB 3	601.20	6" 5	6" B32	8" DRAIN BASIN	
MH 1	601.00	6" B30	6" B30		



ARCHITECTURE
310 E. 12th St., Suite 200
Columbus, OH 43215
614.265.1111
www.studiosarch.com

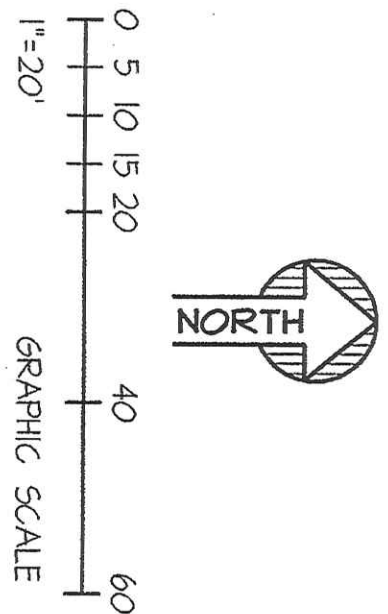
FIRST CALL FOR HELP
600 FREEDOM DRIVE
NAPOLION, OHIO

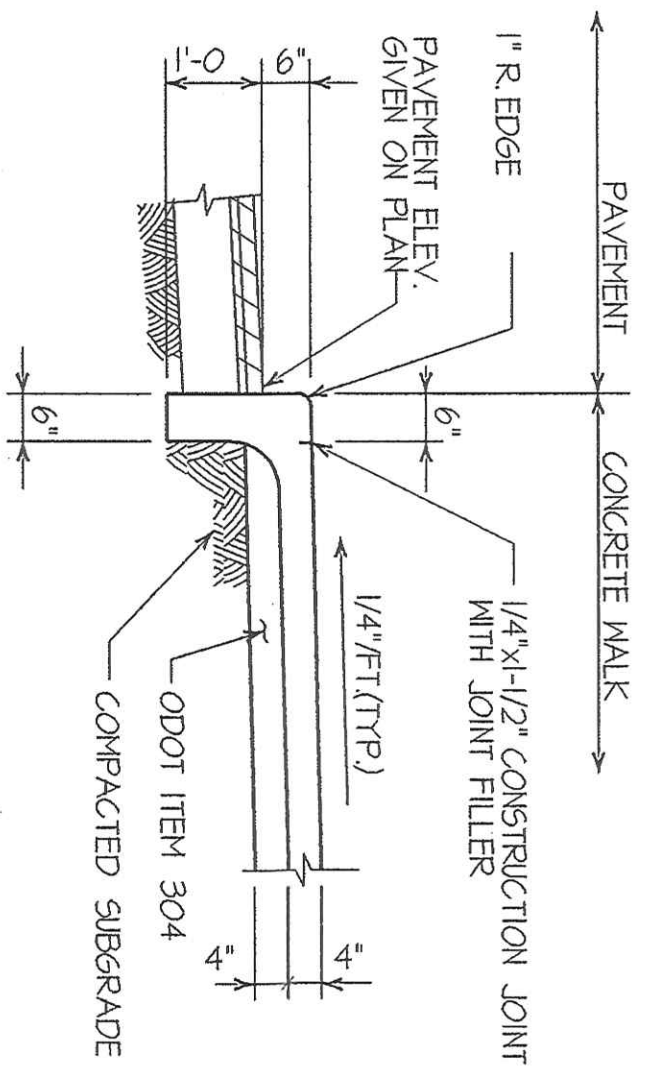


CONSULTANTS
First Call For Help, Inc.

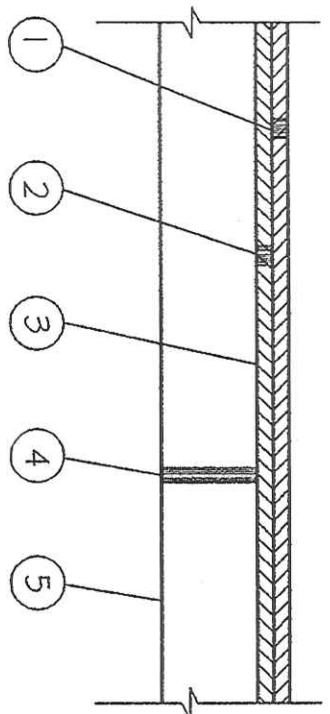
SEAL

DESIGNED	C. HINDEBAUGH
CHECKED	S. SPEER
APPROVED	
PROJECT MANAGER	C. EBYAID
CLIENT/PROJ. NUMBER	02-1051-01
DRAWING NUMBER	SD-500
TITLE	UTILITY PLAN



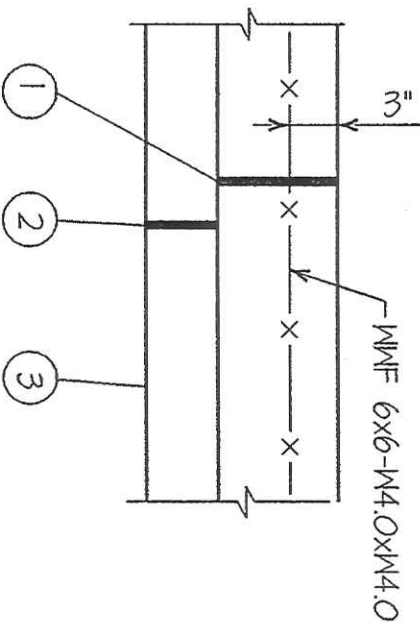


INTEGRAL CURB & SIDEWALK SECTION 1
SD-300
NO SCALE



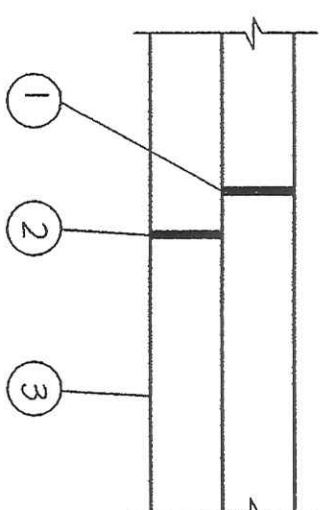
- 1 ODOT ITEM 404 1 1/2" ASPHALT CONCRETE PG64-22
- 2 ODOT ITEM 402 1 1/2" ASPHALT CONCRETE PG64-22
- 3 ODOT ITEM 408 BITUMINOUS PRIME COAT (0.35 GAL./SQ.YD)
- 4 ODOT ITEM 304 6" AGGREGATE BASE (2 EQUAL LAYERS)
- 5 ODOT ITEM 203 SUBGRADE COMPACTION

LIGHT DUTY ASPHALT PAVEMENT SECTION 2
SD-300
NO SCALE



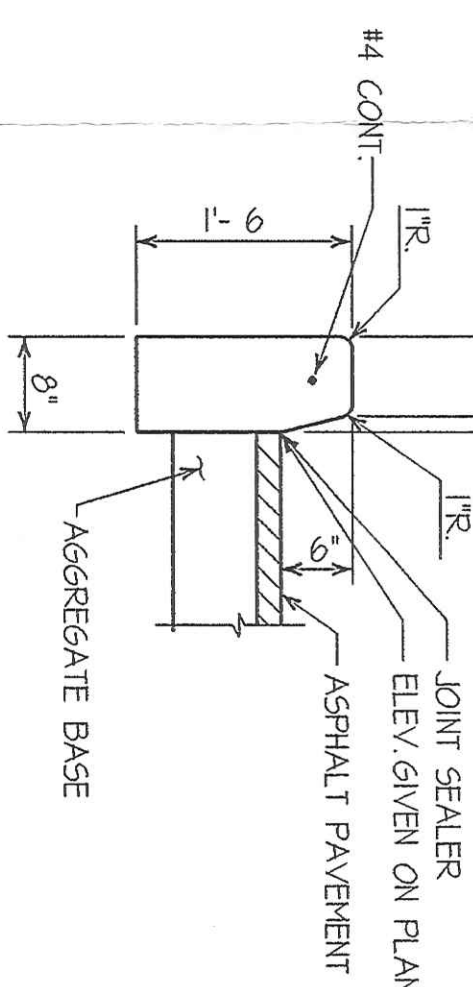
- 1 ODOT ITEM 451 6" REINFORCED PORTLAND CEMENT CONCRETE PAVEMENT
- 2 ODOT ITEM 304 6" AGGREGATE BASE
- 3 ODOT ITEM 203 SUBGRADE COMPACTION

HEAVY DUTY CONCRETE PAVEMENT SECTION 3
SD-300
NO SCALE

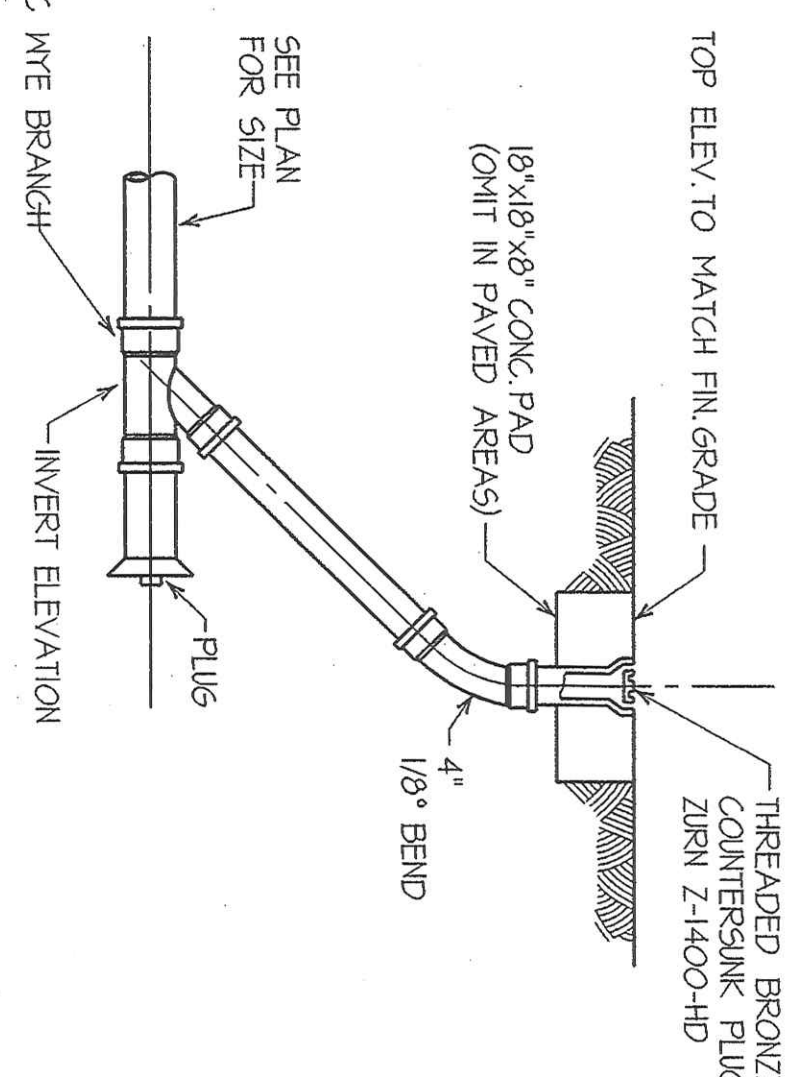


- 1 ODOT ITEM 451 4" PORTLAND CEMENT CONCRETE
- 2 ODOT ITEM 304 4" AGGREGATE BASE
- 3 ODOT ITEM 203 SUBGRADE COMPACTION

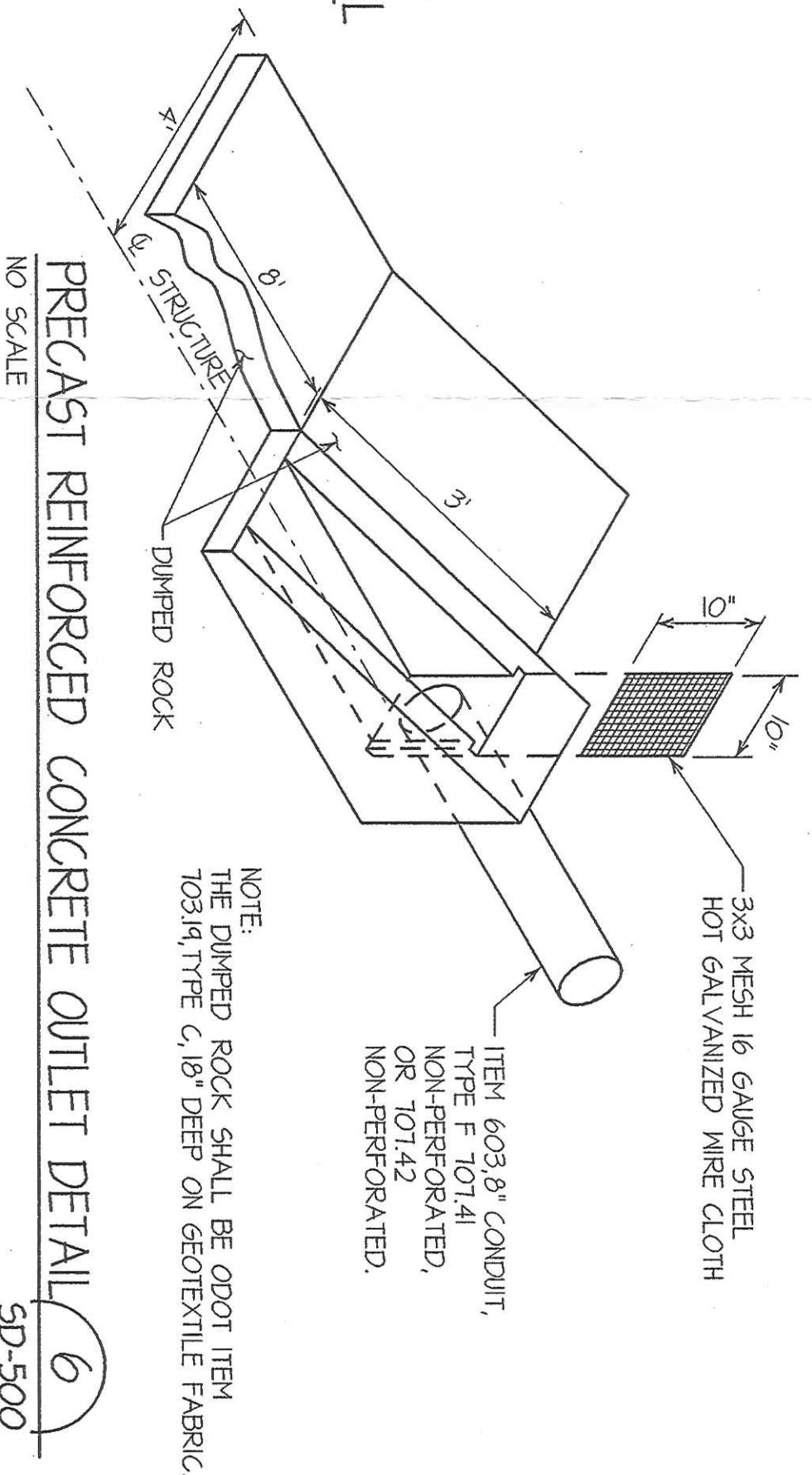
CONCRETE SIDEWALK SECTION 4
SD-300
NO SCALE



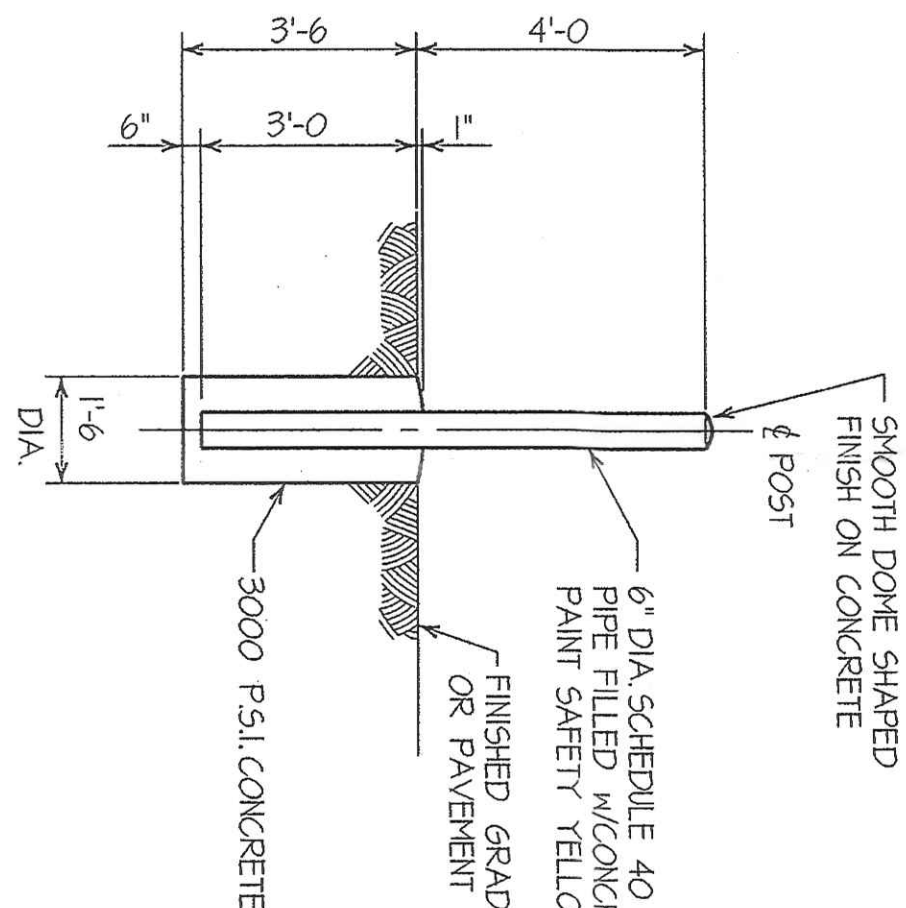
CONCRETE CURB DETAIL 5
SD-300
NO SCALE



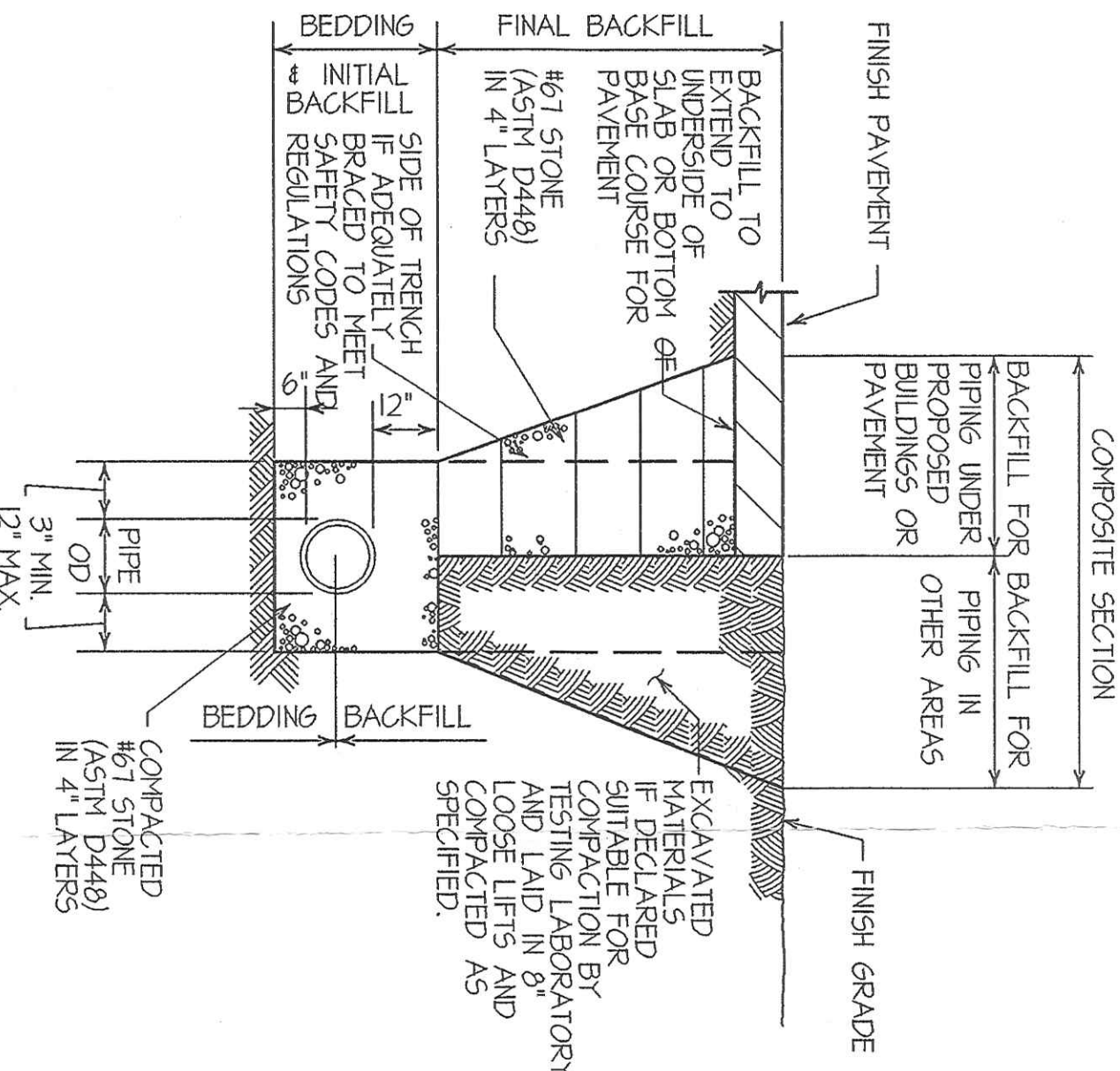
SANITARY SEWER CLEANOUT DETAIL
NO SCALE



PRECAST REINFORCED CONCRETE OUTLET DETAIL 6
SD-500
NO SCALE



TYPICAL GUIDE POST DETAIL
NO SCALE



PIPE BEDDING & BACKFILL DETAIL
NO SCALE

UTILITY NOTES CONT.

1. SANITARY SEWERS

ALL CONSTRUCTION AND MATERIALS SHALL CONFORM TO THE STANDARDS OF THE CITY OF CLEVELAND, OHIO, LATEST EDITION, AND TO THE SPECIFICATIONS OF THE OHIO DEPARTMENT OF TRANSPORTATION DATED JANUARY 1, 2002.

ALL PVC SANITARY SEWER CONDUIT SHALL BE ASTM D-3034 SDR-35 WITH CELL CLASSIFICATION 1254-B OR APPROVED EQUAL.

ALL SANITARY SEWER CONDUIT SHALL CONTAIN PREMIUM JOINTS PER ASTM D-3322.

ROOF DRAIN FOUNDATION DRAINS AND OTHER CLEAN WATER CONNECTIONS TO THE SANITARY SEWER ARE PROHIBITED.

SEWER TESTING

A. ALL RIMS OF THE SANITARY SEWER SHALL BE TESTED FOR INFILTRATION BY AN INDEPENDENT TESTING LABORATORY. THE MAXIMUM RATE OF LEAKAGE OR INFILTRATION SHALL NOT EXCEED 100 GALLONS PER INCH OF DIAMETER PER MILE OF CONDUIT PER 24 HOURS.

B. ALL NEW MANHOLES SHALL BE VACUUM TESTED PER ASTM C-1244.

C. PVC PIPE SECTIONS BETWEEN MANHOLES SHALL BE TESTED FOR RING DEFLECTION WHICH SHALL NOT EXCEED FIVE PERCENT (5%).

D. SHOULD ANY SECTION OF CONDUIT FAIL TO MEET TEST REQUIREMENTS, IT SHALL BE THE RESPONSIBILITY OF THE CONTRACTOR TO REPAIR OR REPLACE THE DEFECTIVE SECTION AND MAKE ALL NECESSARY CORRECTIONS. THE COST OF ALL MATERIALS, EQUIPMENT, LABOR AND INCIDENTALS NECESSARY FOR REPAIRING THE TESTS AND MAKING ANY NECESSARY CORRECTIONS AND REPLACEMENTS SHALL BE THE CONTRACTOR'S RESPONSIBILITY.

THE LOCATION OF ALL EXISTING UTILITIES AS SHOWN ON THESE PLANS ARE APPROXIMATE. THE CONTRACTOR SHALL BE RESPONSIBLE FOR VERIFYING THE LOCATION OF ALL UTILITIES. THE RESPONSIBILITY OF THE CONTRACTOR TO EXISTING UTILITIES CAUSED BY HIS OPERATIONS, FOR AIR AND ALL DAMAGE TO EXISTING UTILITIES CAUSED BY HIS OPERATIONS, UNDERGROUND UTILITIES, TWO (2) WORKING DAYS BEFORE YOU DIG CALL OHIO UTILITIES PROTECTION SERVICE (OUPS) AT 1-800-362-2764. NON-EMERGENCY MUST BE CALLED DIRECTLY.

INFECTION - THE CONTRACTOR SHALL CALL THE CITY ENGINEER AT (44) 592-4000 A MINIMUM OF THREE (3) WORKING DAYS PRIOR TO THE START OF CONSTRUCTION FOR THE INSPECTION OF SANITARY SEWERS, WATER LINES, AND STORM DRAINS.

2. WATERLINES

ALL WATER LINE PIPING SHALL BE LAID TO A DEPTH WHICH WILL INSURE A MINIMUM COVER ABOVE THE PIPE OF NOT LESS THAN 5'-0" FROM THE PROPOSED GRADES.

ALL WATERLINE CONSTRUCTION SHALL BE PER NFPA NO. 24, 1985.

PROVIDE THRUST BLOCKS AT ALL BENDS AND FITTINGS PER NFPA NO. 24, 1985.

ALL MATERIALS AND CONSTRUCTION SHALL BE IN ACCORDANCE WITH CURRENT CITY OF NAPOLEON DIVISION OF WATER STANDARDS AND SPECIFICATIONS.

WATER MAINS SHALL BE INSTALLED TESTED AND DISINFECTED UNDER THE DIRECT SUPERVISION OF THE DIVISION OF WATER.

TAPPING SLEEVES AND VALVES AND 8" INCH OR LARGER TAPS SHALL BE FINISHED AND INSTALLED BY THE DIVISION OF WATER AT THE CONTRACTOR'S EXPENSE. ALL EXCAVATION AND BACKFILL SHALL BE PERFORMED BY THE CONTRACTOR.

ALL PUBLIC AND PRIVATE UTILITY COMPANIES SHALL BE NOTIFIED BY THE CONTRACTOR IN WRITING AT LEAST SEVEN (7) DAYS IN ADVANCE OF BEGINNING ANY CONSTRUCTION OPERATIONS.

THE DIVISION OF WATER SHALL BE NOTIFIED (44-344-104) AT LEAST THREE (3) WORKING DAYS IN ADVANCE OF ANY CONSTRUCTION ACTIVITY IN ORDER TO ARRANGE FOR INSPECTION OF THE PROJECT.

THE SPECIFICATIONS OF THE AMERICAN NATIONAL STANDARDS INSTITUTE (ANSI) SHALL BE USED FOR ALL MATERIALS AND CONSTRUCTION. THE SOCIETY FOR TESTING AND MATERIALS HEREIN REFERRED TO UNLESS OTHERWISE NOTED SHALL BE THE LATEST SPECIFICATIONS OF THE RESPECTIVE ORGANIZATIONS AND MANUFACTURED IN THE UNITED STATES.

PIPE SHALL BE ANSI-A21.3 (AWWA C311) DUCTILE CAST IRON WITH A MINIMUM WALL THICKNESS MEETING THE REQUIREMENTS OF ANSI-A21.3 TABLE 5.14 THICKNESS CLASS 52 FOR 4 INCH THROUGH 12 INCH.

FITTINGS SHALL BE 600 PSI OR DUCTILE CAST IRON CONFORMING TO ANSI-A21.3 (AWWA C104) AND A 1/2" INCH COAL TAR ENAMEL OUTSIDE COATING SPECIAL LININGS MAY BE REQUIRED AT THE REQUEST OF THE CITY FOR SPECIAL CONDITIONS.

VALVE MANHOLE FRAMES AND COVERS SHALL BE 22 INCHES NEWMH R-1165 (ASTM A-48) WITH INTERCHANGEABLE PIPES AND MACHINED HORIZONTAL BEARING SURFACES.

VALVE BOXES SHALL BE OF THE BUFFALO TYPE THREE (3) PIECE ADJUSTABLE SCREW TYPE BUFFALO PIPE AND FOUNDRY COMPANY, NO. 5500 ALABAMA, PIPE COMPANY NO. 1025 CLON NO. P450, AMETEK ROADWAY 5-245 WITH CAST IRON RILL FLANGED RING OR APPROVED EQUAL.

APPARATUS SHALL BE LIMITED TO AMERICAN MODEL B-432-B OR B-64-B WITH BREAKABLE COPING KENNEDY METALLURGY CLON OR RENEWAL VALVE COMPANIES MEETING AWWA SPECIFICATION C500 AND/OR C501 AS PURCHASED BY THE DIVISION OF WATER.

INSTALLATION AND PRESSURE TESTING SHALL BE AS PER AWWA C-600 DISTENTION SHALL MEET OR EXCEED AWWA C-601.

NO DEVIATIONS FROM THE ABOVE SPECIFICATIONS WILL BE PERMITTED. DETAILED SPECIFICATIONS CAN BE OBTAINED FROM THE DIVISION OF WATER.

NOTE: THE OHIO ENVIRONMENTAL PROTECTION AGENCY REQUIRES A CONFORMANCE TO THE 1992 EDITION OF "RECOMMENDED STANDARDS FOR WATER WORKS". THIS STANDARD SHALL BE EQUALLED OR EXCEEDED FOR WATER LINES. SPECIAL ATTENTION SHALL BE GIVEN TO THE FOLLOWING SECTIONS OF PART 6:

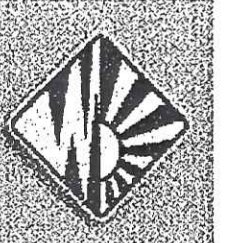
- 8.01. MATERIALS CONFORM TO AWWA STANDARDS
- 8.12. MINIMUM 6" DIA. FIRE PROTECTION
- 8.53. MINIMUM 5" GROUND COVER
- 8.55. PRESSURE TESTING AWWA C-600 OR NFPA 24 *
- 8.56. DISTENTION TESTING AWWA C-601
- 8.57. DISTENTION TESTING AWWA C-601
- 8.63. 18" VERTICAL SEPARATION WATER MAINS
- 8.66. NO ENTRY AND/OR CONTACT WITH SEWER MANHOLE

ANY DEVIATION FROM THE ABOVE WILL NOT BE PERMITTED UNLESS SPECIFICALLY INCLUDED IN THE GENERAL NOTES OR OTHERWISE SHOWN ON THE PLANS. ANY DEVIATIONS SHALL BE IN ACCORDANCE WITH THE MENTIONED OHIO EPA STANDARDS FALL SHORT OF THE DIVISION OF WATER STANDARDS. THE LATTER SHALL GOVERN.

NOTE: IT SHALL BE THE CONTRACTOR'S RESPONSIBILITY TO RECOVER ALL MATERIALS AND EQUIPMENT FROM THE PROJECT SITE. THE CONTRACTOR SHALL BE RESPONSIBLE FOR THE PROPER DISPOSAL OF ALL MATERIALS AND EQUIPMENT. THE CONTRACTOR SHALL BE RESPONSIBLE FOR THE PROPER DISPOSAL OF ALL MATERIALS AND EQUIPMENT. THE CONTRACTOR SHALL BE RESPONSIBLE FOR THE PROPER DISPOSAL OF ALL MATERIALS AND EQUIPMENT.

studios
ARCHITECTURE
1001 Madison Street
Cleveland, OH 44114
216.393.1515
www.studiosarch.com

FIRST CALL FOR HELP
600 FREEDOM DRIVE
NAPOLEON, OHIO



First Call For Help, Inc.

CONSULTANTS

SEAL	
------	--

DRAWING NUMBER	SD-600
DETAILS	
DRAWING TITLE	
DATE	02-10-01
BY	C. HINDBAUGH
CHECKED	S. STEER
DESIGNED	
PROJECT MANAGER	C. ENVALD
C.L. PROJECT NUMBER	02-1051-01
NO.	1
DATE	02-10-01
BY	C. HINDBAUGH
CHECKED	S. STEER
DESIGNED	
PROJECT MANAGER	C. ENVALD
C.L. PROJECT NUMBER	02-1051-01

