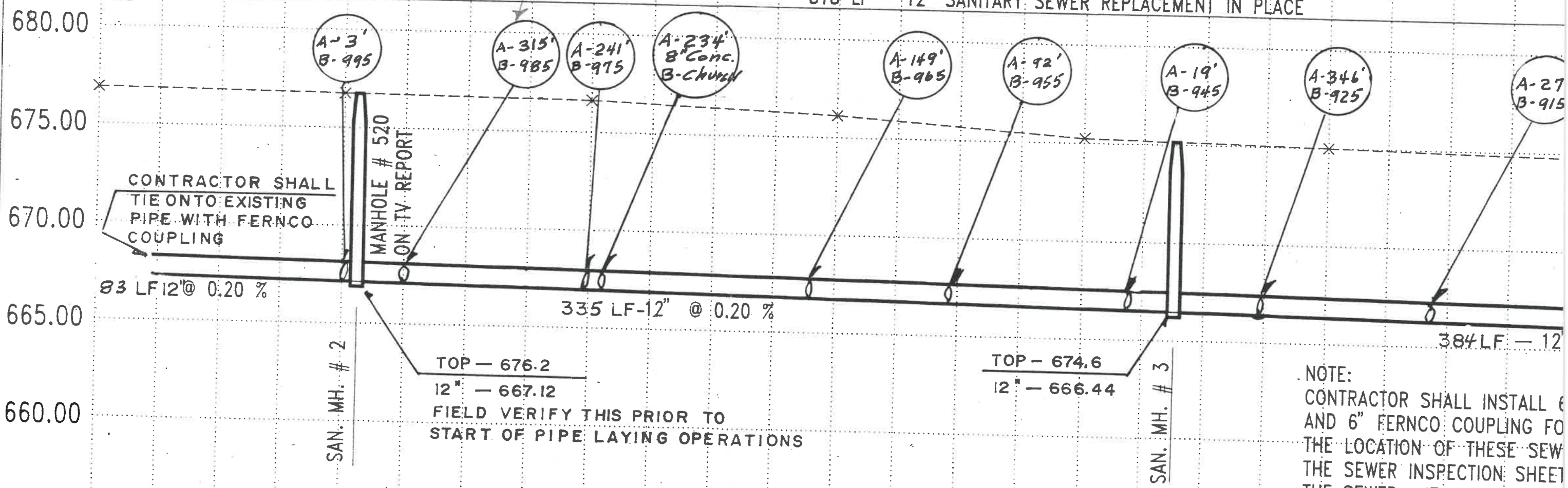


EXISTING SANITARY MANHOLE # 2  
CONTRACTOR SHALL REMOVE AND REPLACE

EXISTING SANITARY MANHOLE # 3  
CONTRACTOR SHALL REMOVE AND REPLACE

*A = Distance from Tee to Downstream M.H.  
1975 Sewer Replacement*

818 LF - 12" SANITARY SEWER REPLACEMENT IN PLACE



NOTE:  
CONTRACTOR SHALL INSTALL 6  
AND 6" FERNCO COUPLING FO  
THE LOCATION OF THESE SEW  
THE SEWER INSPECTION SHEET  
THE SEWER. IT IS INCLUDED

985 Ken/wath