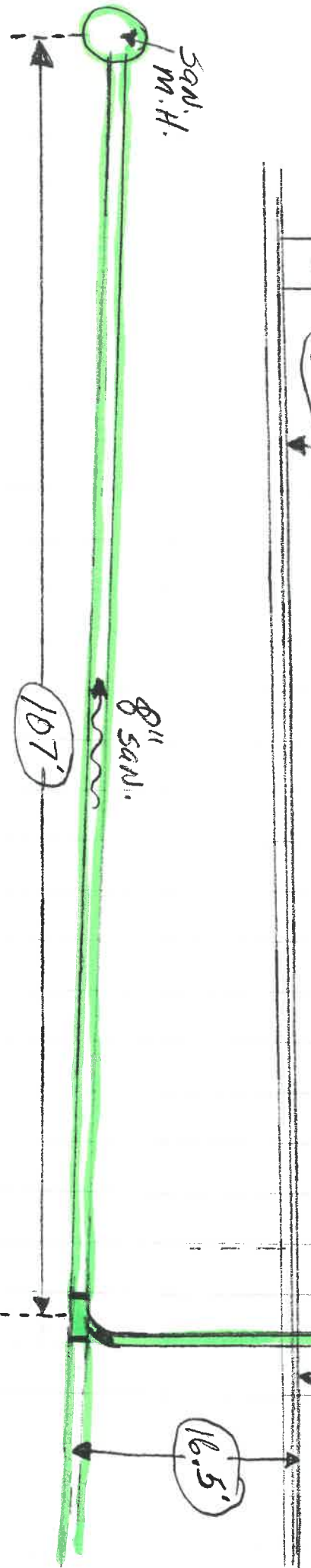
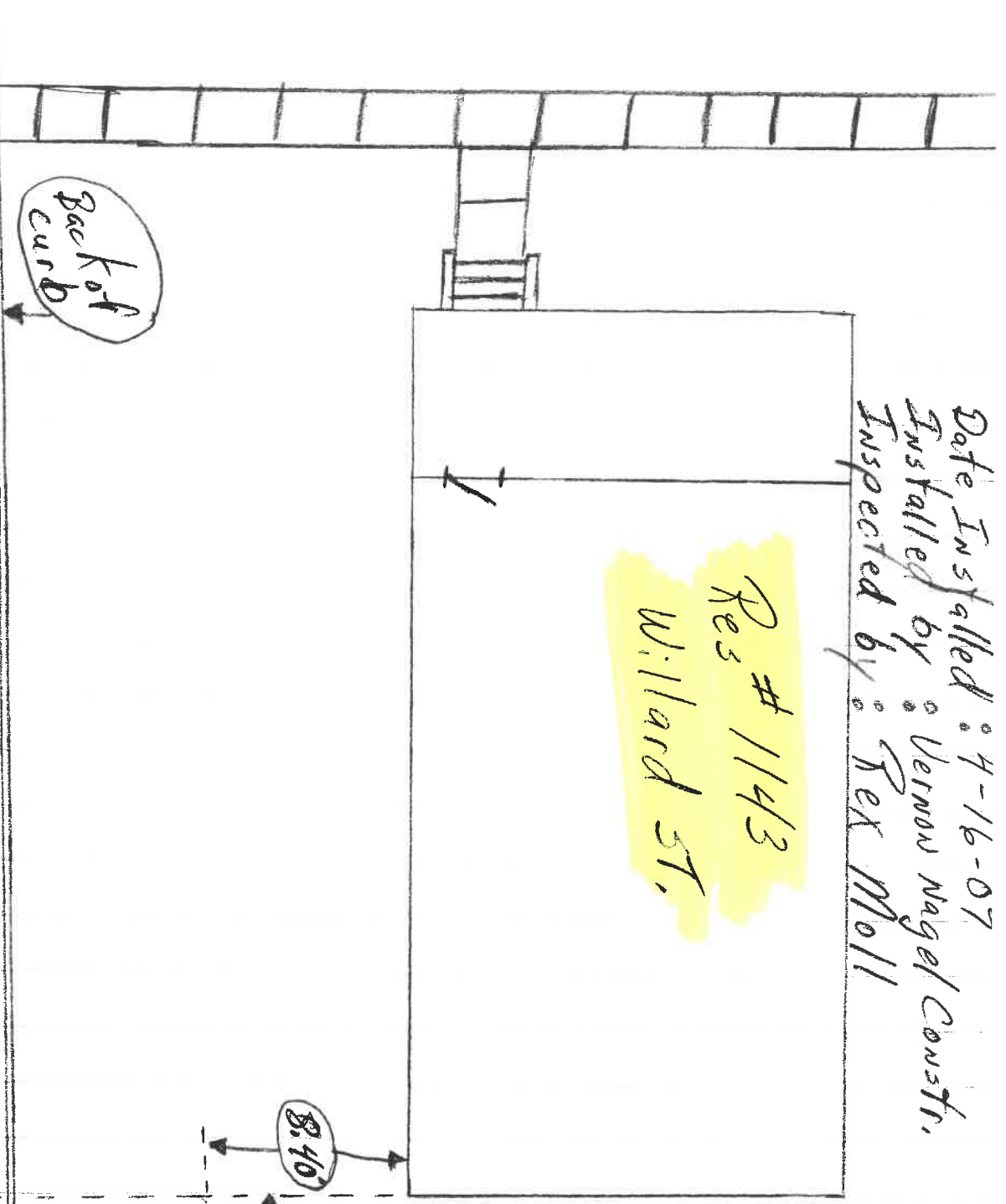


Date Installed: 4-16-07
Installed by: Vernon Nagel Const.
Inspected by: Rex Moll

Res # 1143
Willard St.



Back of curb

590' M.H.

107'

8" 5/8"

8.40'

6"

6" plug

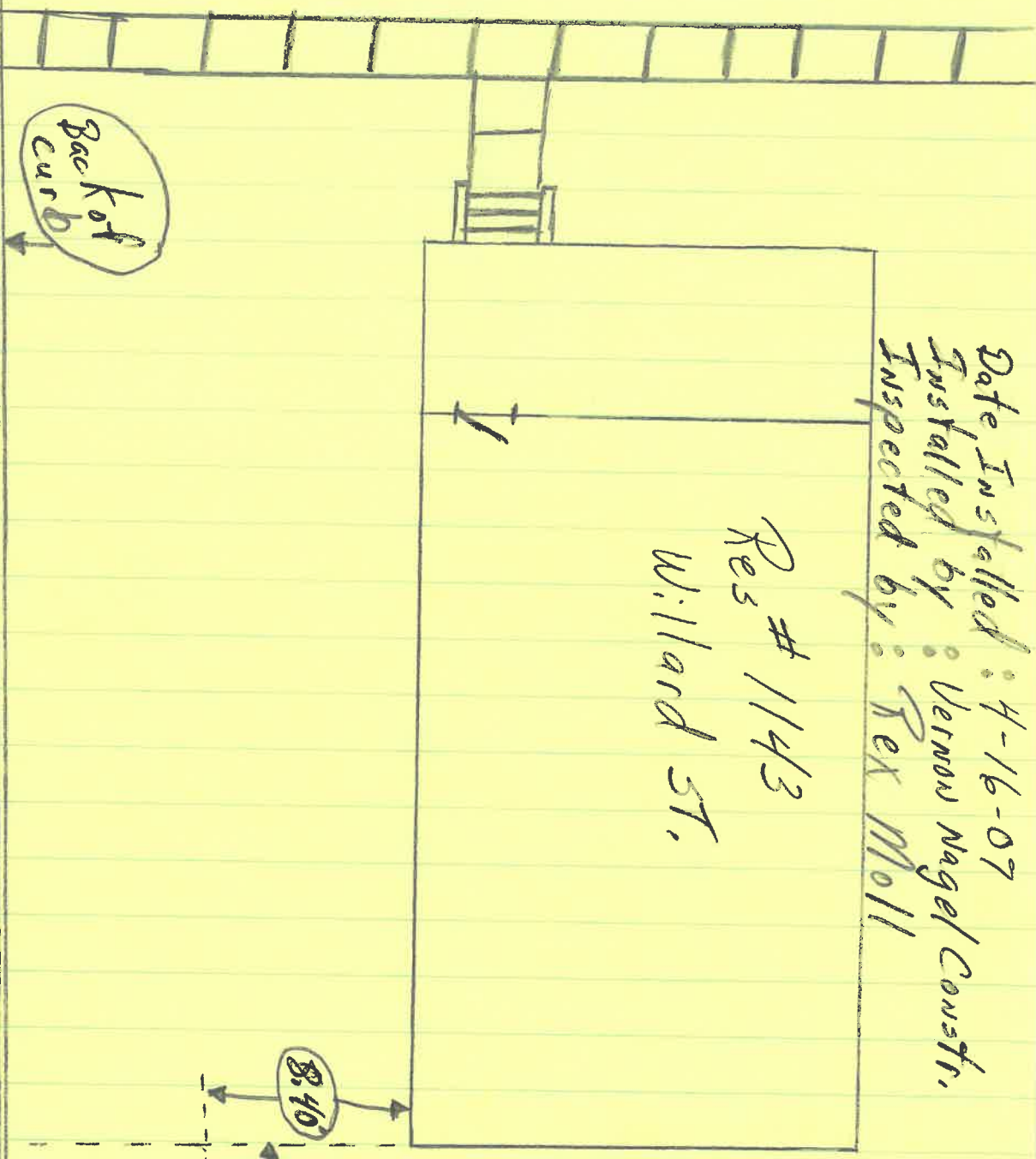
6" c/d Deep 5.5" FL.

12"

16.5'

Date Installed: 4-16-07
Installed by: Vernon Nagel Const.
Inspected by: Rex Mo11

Res # 1143
Willard St.



59N.
M.H.

8" sams.
107'

